

UNI-Q-MUA 2.0

2025

UNI-Q-MUA

3 Different Surface Treatments for Hard and Soft Tissue Management



Bone healing around titanium and titanium nitride-coated dental implants with three surfaces: an experimental study in rats. Scarano A, Piattelli M, Vrespa G, Petrone G, Iezzi G, Piattelli A. - Clin Implant Dent Relat Res. 2003

Bacterial adhesion on titanium nitride-coated and uncoated implants: an in vivo human study. Scarano A, Piattelli M, Vrespa G, Caputi S, Piattelli A. - J Oral Implant. 2003

Cytocompatibility of implants coated with titanium nitride and zirconium nitride. Prachar P, Bartakova S, Brezina V, Cvrcek L, Vanek J. - Bratisl Lek Listy. 2015

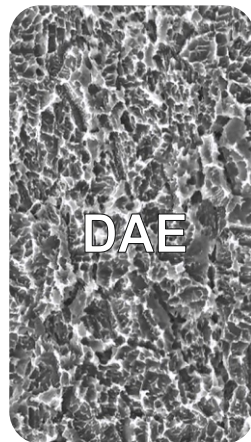
Evaluation of antibacterial activity and osteoblast-like cell viability of TiN, ZrN and (Ti1-xZrx)N coating on titanium. Ji MK, Park SW, Lee K, Kang IC, Yun KD, Kim HS, Lim Hp. - J Adv Prosthodont. 2015

Surface properties correlated with the human gingival fibroblasts attachment on various materials for implant abutments: a multiple regression analysis. Kim YS1, Shin SY, Moon SK, Yang SM. - Acta Odontol Scand. 2015



Machined and sandblasted human dental implants retrieved after 5 years: a histologic and histomorphometric analysis of three cases. Iezzi G, Vantaggiato G, Shibli JA, Fiera E, Falco A, Piattelli A, Perrotti V. - Quintessence Int. 2012

Polyspecies biofilm formation on implant surfaces with different surface characteristics. Schmidlin PR, Müller P, Attin T, Wieland M, Hofer D, Guggenheim B. - J Appl Oral Sci. 2013



Red blood cell and platelet interactions with titanium implant surfaces. Park JY, Davies JE. - Clin Oral Implants Res. 2000

Surface chemistry effects of topographic modification of titanium dental implant surfaces. 2: In vitro experiments. Morra M, Cassinelli C, Bruzzone G, et al. - Int J Oral and Maxillofac Implants 2003

Surface microtopography regulates osteointegration: the role of implant surface microtopography in osteointegration. Schwartz Z1, Nasazky E, Boyan BD. - 2005

A new chemical etching process to improve endosseous implant osseointegration: in vitro evaluation on human osteoblast-like cells. Giordano C, Sandrini E, Busini V, Chiesa R, Fumagalli G, Giavaresi G, Fini M, Giardino R, Cigada A. - Int J Artif Organs. 2006

Enhancing surface free energy and hydrophilicity through chemical modification of microstructured titanium implant surfaces. Morra M, Volpe CD, Siboni S, by F. Rupp, L. Scheideler, N. Olshanska, M. de Wild, M. Wieland, J. Geis-Gerstorfer. - J Biomed Mater Res A. 2006

Assessing double Acid-etched implants submitted to orthodontic forces and used as prosthetic anchorages in partially edentulous patients. De Cravero Marta R1, Carlos IJ. - Open Dent J. 2008.

Mechanical stability of immediately loaded implants with various surfaces and designs: a pilot study in dogs. Neugebauer J, Weinländer M, Lekovic V, von Berg KH, Zoeller JE. Int J Oral Maxillofac Implants. 2009

Influence of implant shape, surface morphology, surgical technique and bone quality on the primary stability of dental implants. Elias CN1, Rocha FA, Nascimento AL, Coelho PG. - J Mech Behav Biomed Mater. 2012

Early-loaded laser-sintered versus acid-etched one-piece dental implants for mandibular premolars replacement: a preliminary study. El-Gammal M1, Ghoneem N, Tawfik H, Madina MA, Fadhil ON, Maria OM. Implant Dent. 2014

Dual-etched implants loaded after 1- and 2-month healing periods: a histologic comparison in baboons. Vernino AR, Kohles SS, Holt RA Jr, Lee HM, Caudill RF, Kenealy JN. Int J Periodontics Restorative Dent 2002

Early endosseous integration enhanced by dual acid etching of titanium: a torque removal study in the rabbit. Klokkevold P, Johnson P, Dadgostari S, Caputo A, Davies JE, Nishimura R. Clin Oral Implants Res 2001



3 SURFACE TREATMENTS

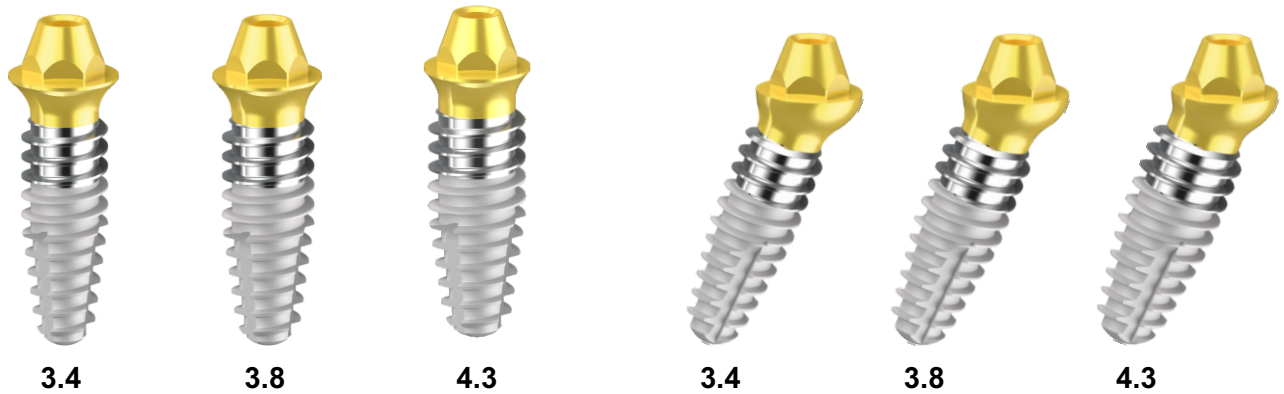
- 1) Transgingival and prosthetic PVD TiN coating - Improves mechanical resistance to wear, has got antibacterial properties, reduces bacterial biofilm adhesion.
- 2) Hybrid Machined Surface for 1.5mm - Reduces bacterial biofilm adhesion for the control of peri-implantitis.
- 3) DAE Double Acid Etching Surface - Increases surface area, removes of micro-defects, increases surface hydrophilicity, increases adhesion of fibrin bridges, improves the substrate for cell adhesion, starts topographic communication for cellular/osteoblastic gene expression, increases bio-electrical antibacterial activity.

The Bacterial Anti-Adhesive Activity of Double-Etched Titanium (DAE) as a Dental Implant Surface

Morena Petrini, Alessandra Giuliani, Emanuela Di Campli, Silvia Di Lodovico, Giovanna Iezzi, Adriano Piattelli and Simonetta D'Ercole¹
International Journal of Molecular Sciences 2020, 21, 8315; doi:10.3390/ijms21218315

UNI-Q-MUA

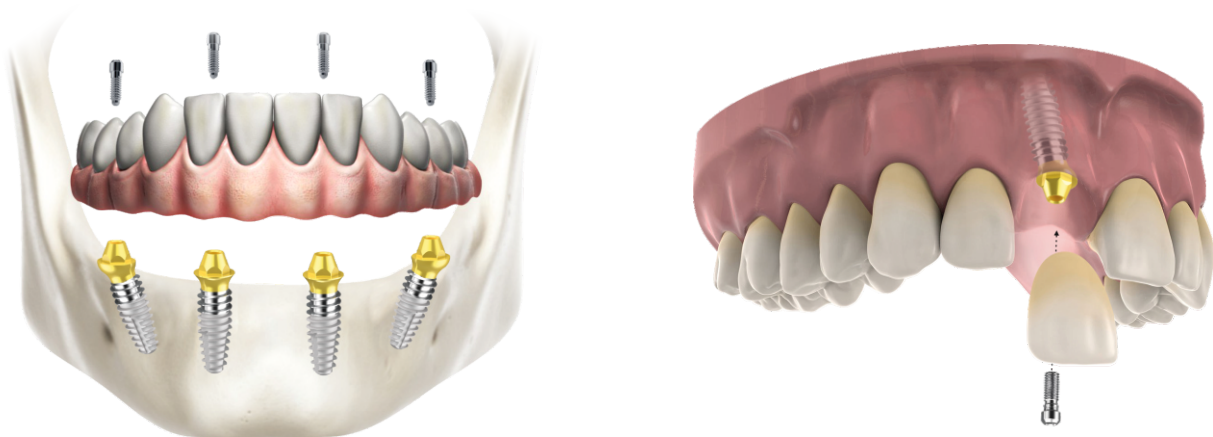
Monophasic implant for screwed prosthetic solution
Toronto bridges - Crowns - Bridges



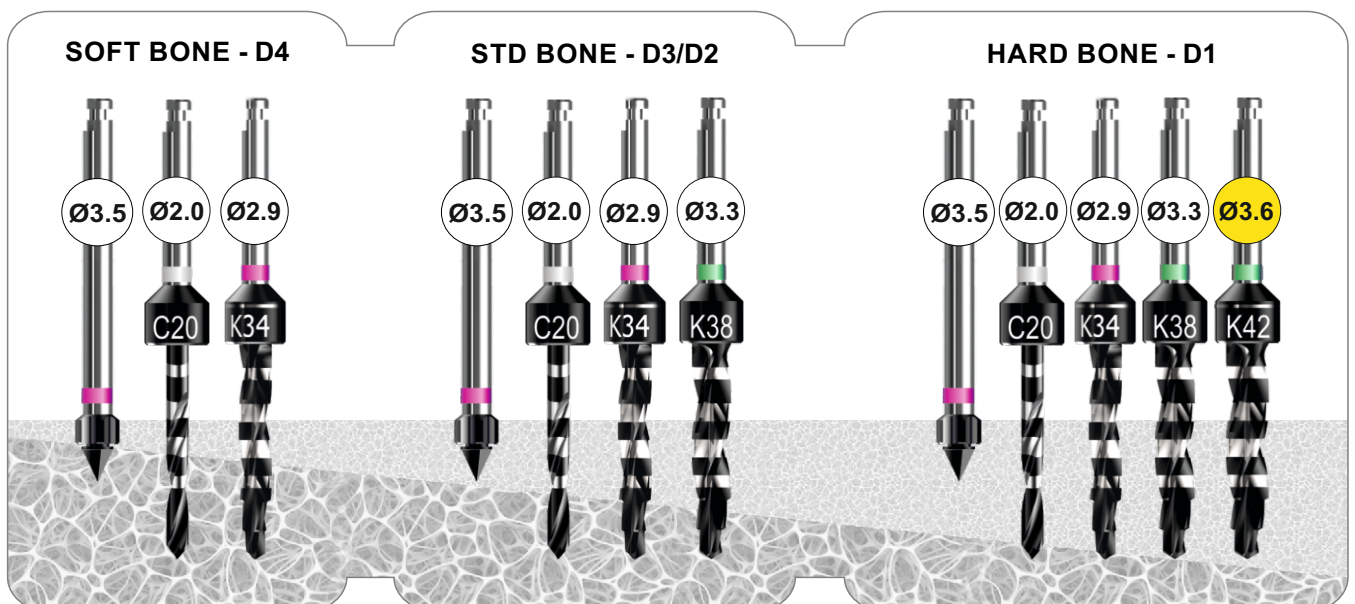
UNI-Q-MUA 2.0 is the evolution of the original UNI-Q-MUA designed in 2015, developed and improved from RESISTAR&D department for a 360° surgical approach.

Designed for the creation and simplification of the Toronto-type prosthesis, it extends its field of application to crowns and bridges. With a 1.5mm trans-gingival neck and a hexagonal anti-rotational prosthetic platform, it allows direct tightening of even a single screwed crown.

Available in 3 diameters, with 3 angles 0° - 17° - 30° and 1 unified prosthetic platform.



EXAMPLE OF STANDARD SURGICAL SEQUENCE FOR UNI-Q-MUA Ø 3.8



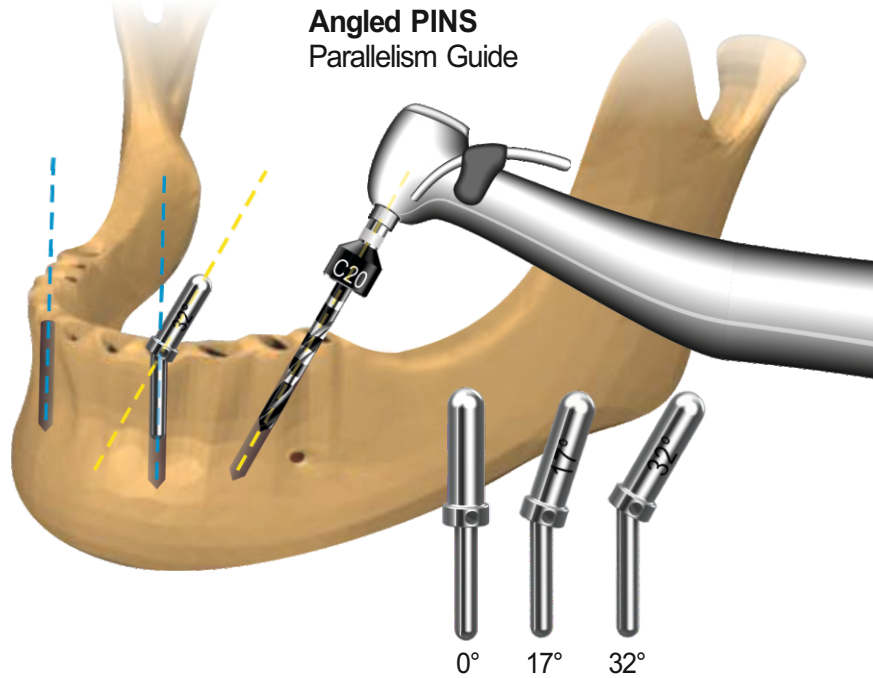
UNI-Q-MUA

Easier surgical approach



UNI-Q-MUA Surgical Kit

Implementable STD kit



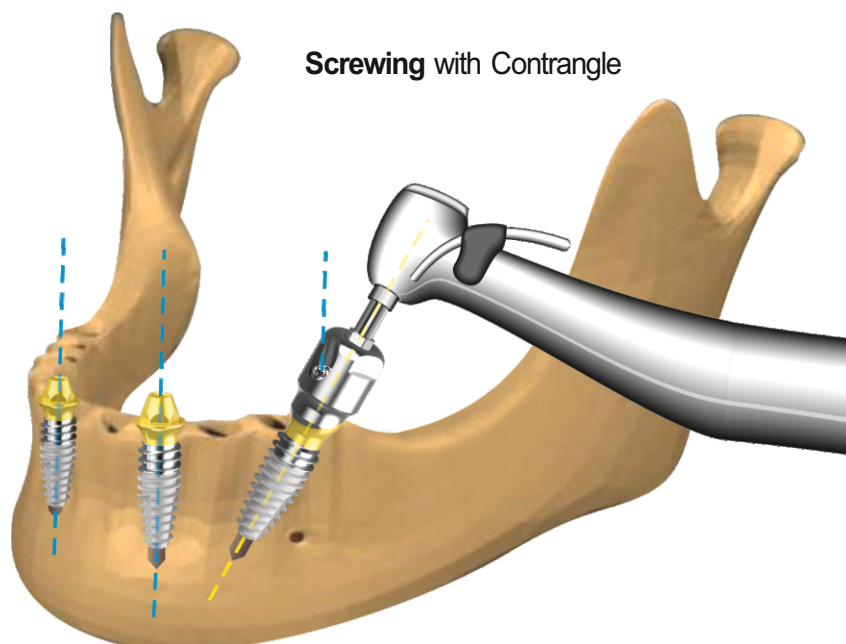
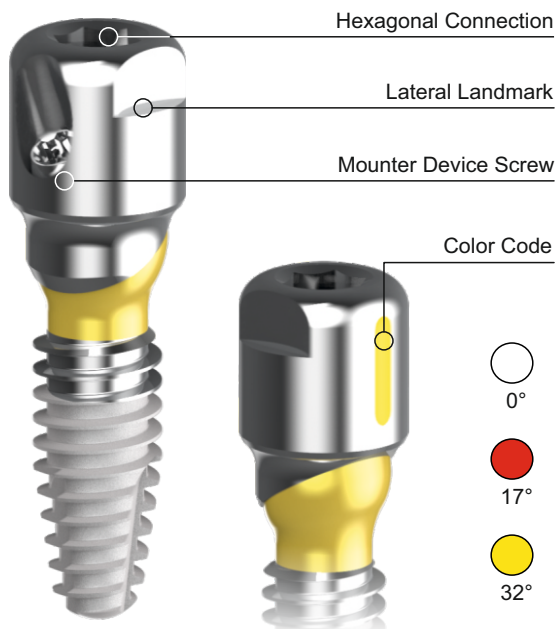
UNI-Q-MUA 2.0

The pre-angled parallelism pins (**PINS**) are indicated for using during surgery, both for helping choosing the implant and as a surgical guide.

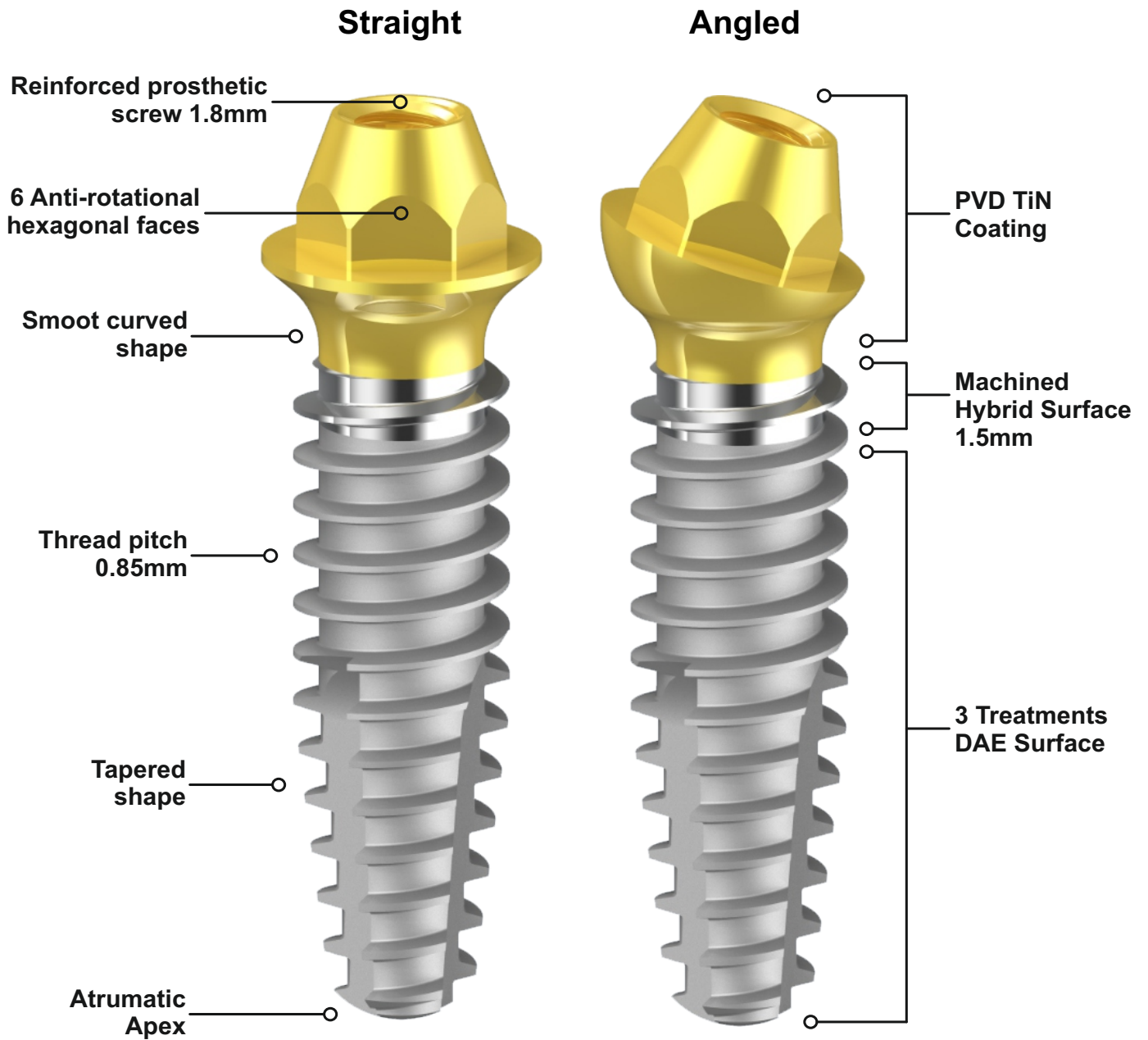
VPS is the solution for the final positioning of the implant allowing a fine tuning of the head orientation. After the disappearance of the last thread turn, during the screwing, UNI-Q-MUA allows a further complete downwards tour in sinking, plus 180° of fine correction.

The UNI-Q-MUA mounter is a pre-assembled device screwed onto the head and is a masterpiece of mechanical engineering.

With a minimized transgingival footprint and 4 spatial reference points, it simplifies the final positioning phases in the 3D visual space



TECHNICAL FEATURES





Ing. C. A. Issoglio & C. S.r.l.

Via F.lli Di Dio, 68 - 28887 Omegna (VB) - ITALIA

Tel. +39.0323.828.004 - Fax +39.0323.828.914

www.resista.it - info@resista.it