

- **Introduction:**

- When a hopeless tooth must be replaced with an osseointegrated implant the usual treatment plan can include the extraction of the compromised tooth, time allocated for healing the extraction sockets, sinus floor elevation in a separate session via the lateral or crestal approach to increase bone height, and eventual implant placement.
- Alternatively, a treatment plan that condenses all of those procedures into a single session would be ideal for patients, with the benefit of a short course of treatment and fewer surgical procedures (Liu, CIDRR 2019). The present clinical case shows a postextractive implant placement associated with a crestal sinus lift; also, periimplant soft tissue management by means of a tridimensional collagen matrix was carried out in order to boost the local biotype.



GIACOMO TARQUINI, DDS

GIACOMO TARQUINI, DDS

VERTICAL FRACTURE

g_tarquini@libero.it

GIACOMO TARQUINI, DDS



GIACOMO TARQUINI, DDS

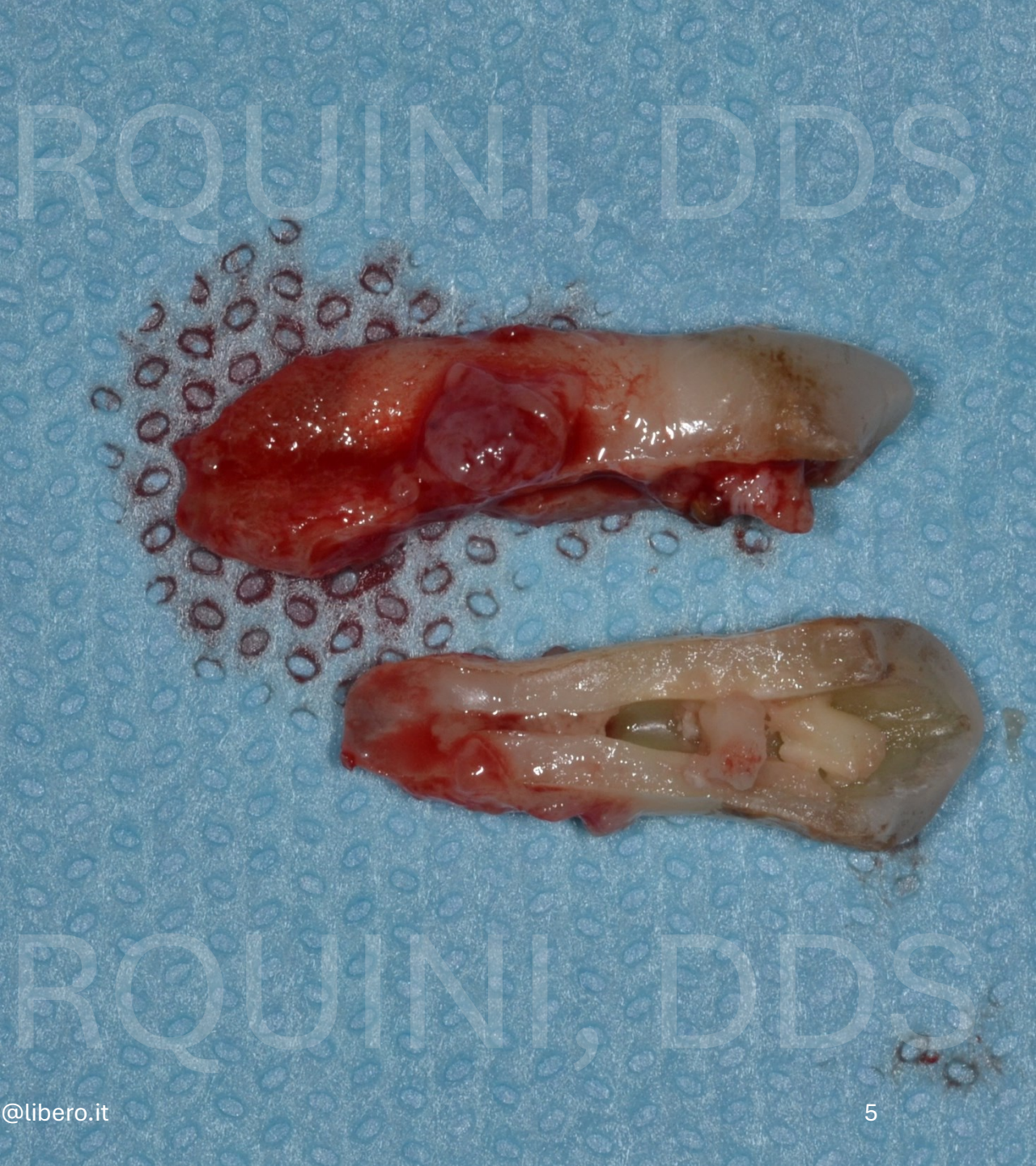
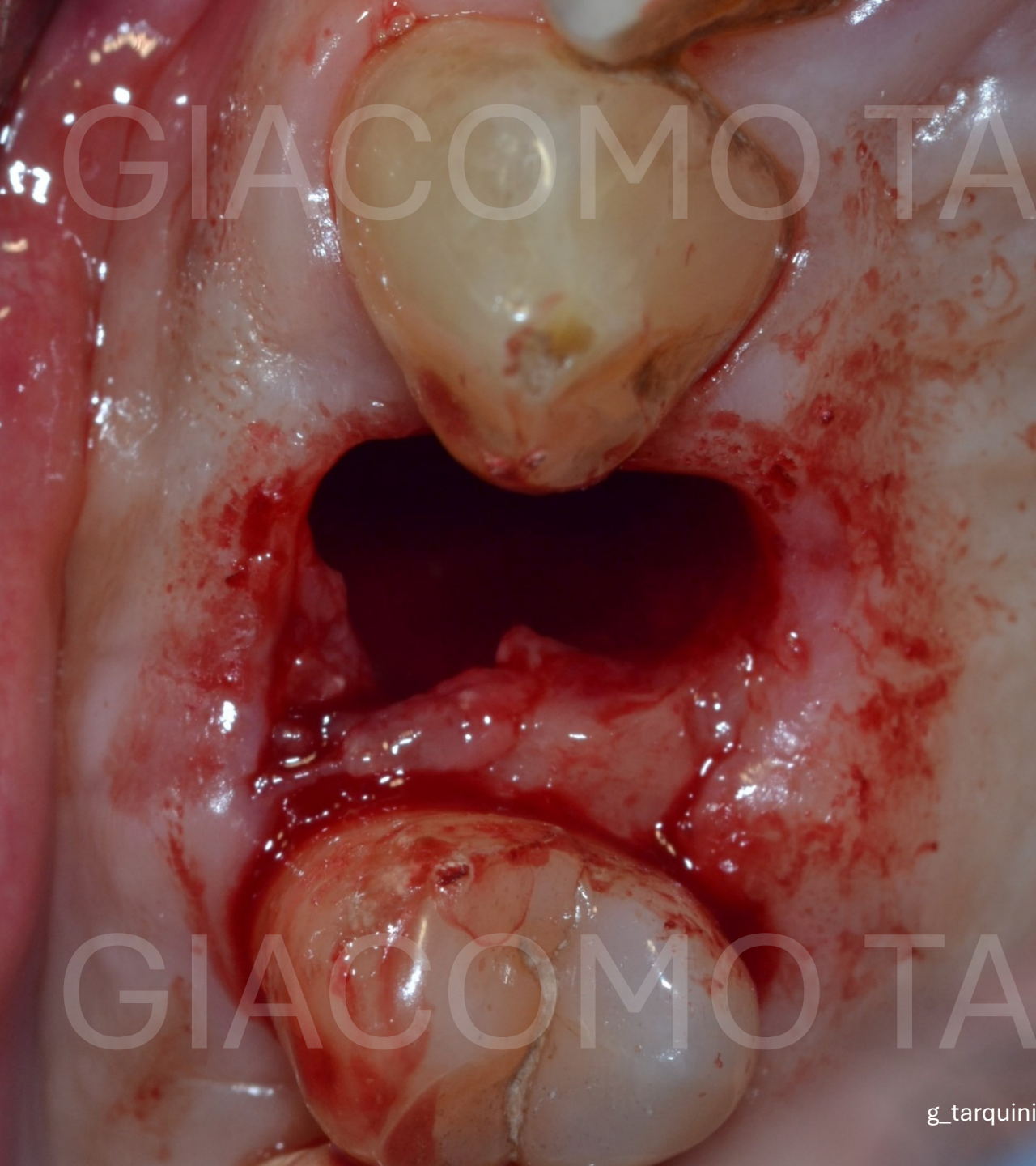
NO RESIDUAL BONE HEIGHT (RBH)

g_tarquini@libero.it



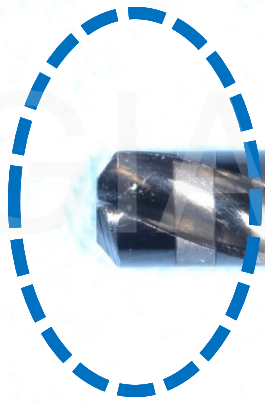
GIACOMO TARQUINI, DDS

GIACOMO TARQUINI, DDS



GIACOMO TARQUINI, DDS

GIACOMO TARQUINI, DDS



**BLUNTED
END**

PRO SL Synus Lift





PRO SCV Sinus Lift



PRO SCV Sinus Lift Kit

PROTOCOLLO CHIRURGICO



PRO SCV Sinus Lift Kit

PROTOCOLLO CHIRURGICO

GIACOMO TARQUINI, DDS



GIACOMO TARQUINI, DDS



1



2



4



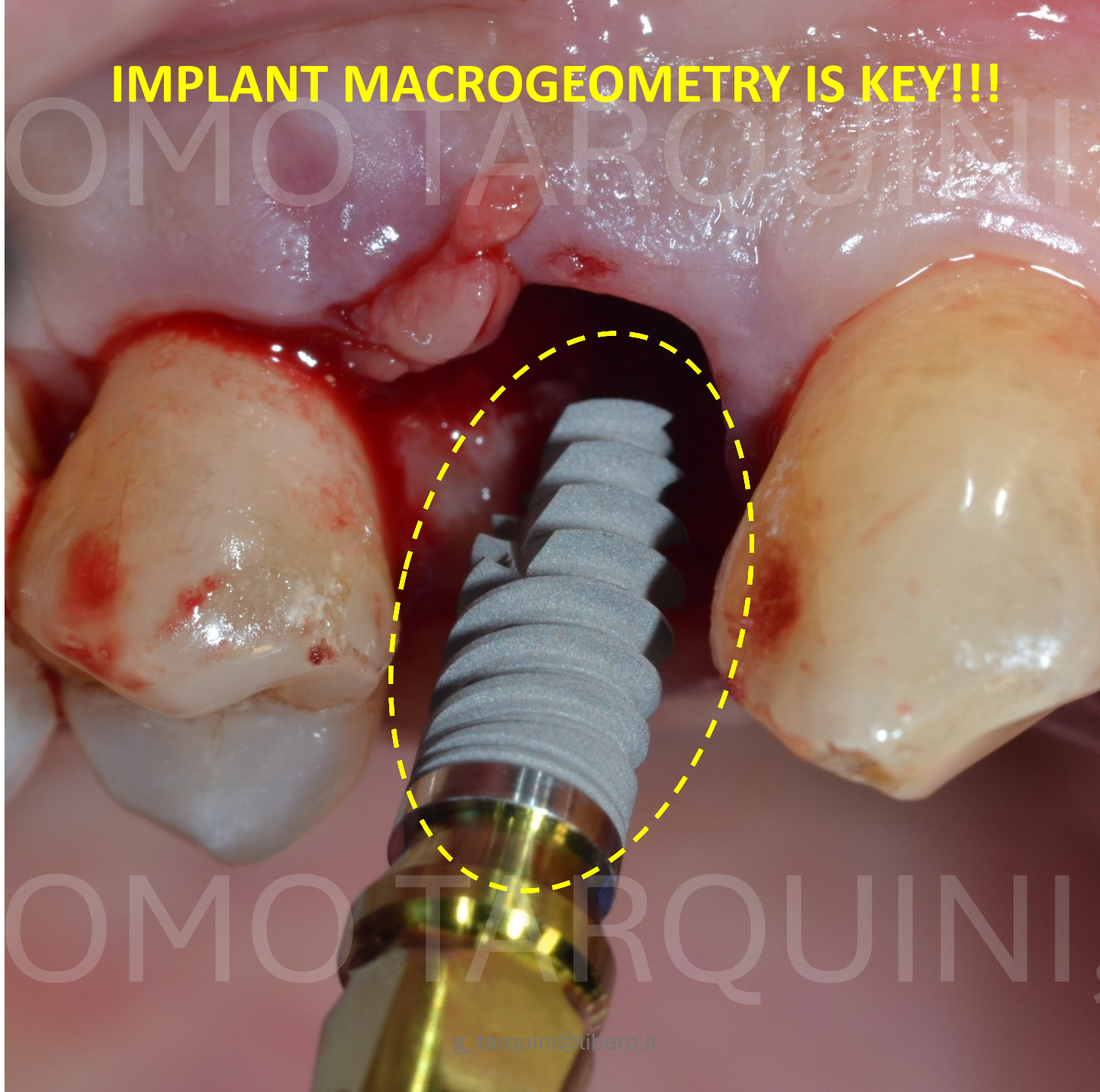
6

GIACOMO TARQUINI, DDS



GIACOMO TARQUINI, DDS

IMPLANT MACROGEOMETRY IS KEY!!!



GIACOMO

TARQUINI

DDS

GIACOMO

TARQUINI

DDS

GIACOMO TARQUINI, DDS



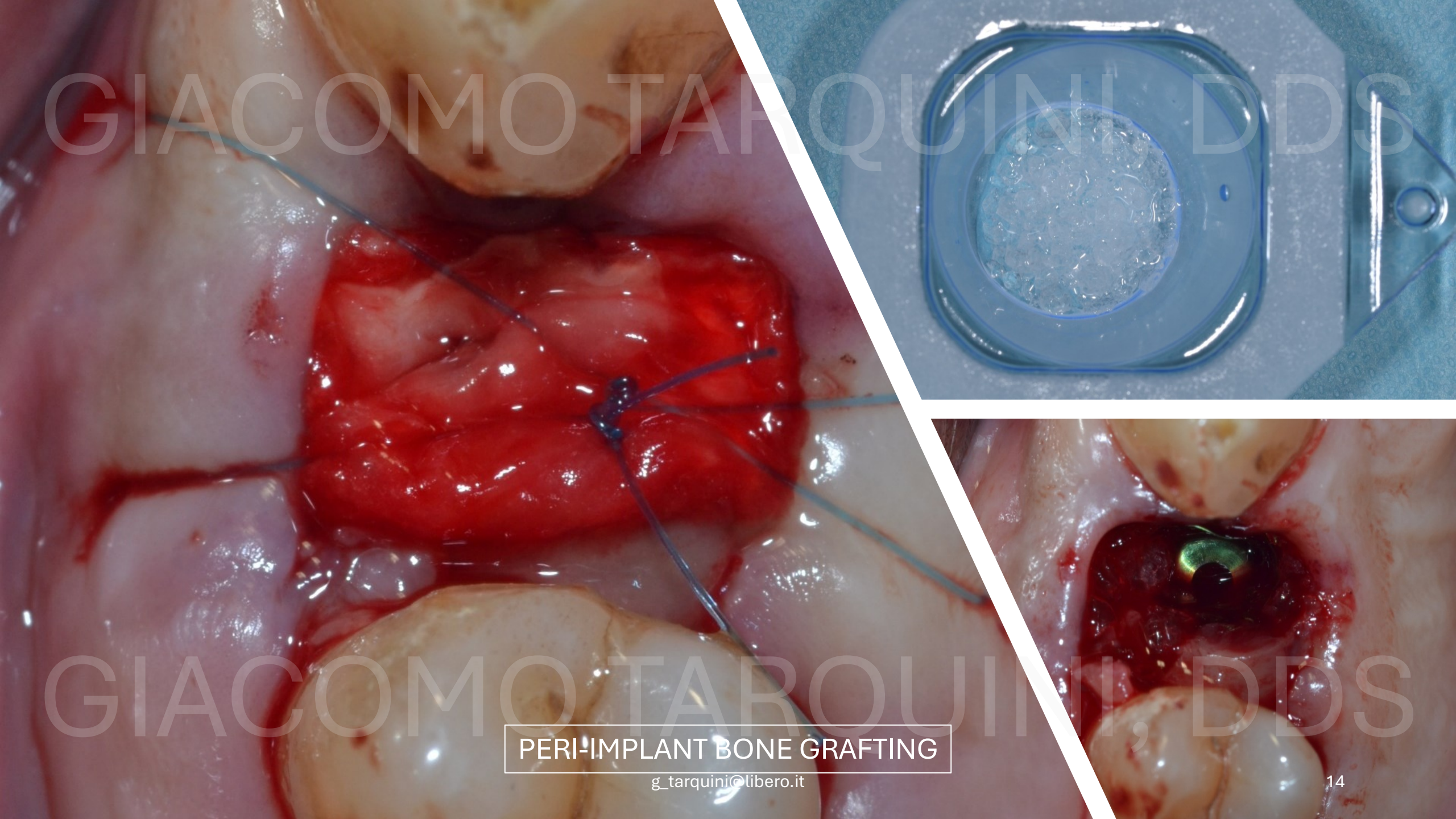
GIACOMO TARQUINI, DDS

GIACOMO TARQUINI, DDS



GIACOMO TARQUINI, DDS

GIACOMO TARQUINI, DDS



GIACOMO TARQUINI, DDS

PERI-IMPLANT BONE GRAFTING

g_tarquini@libero.it

GIACOMO TARQUINI, DDS



GIACOMO TARQUINI, DDS



GIACOMO TARQUINI, DDS

GIACOMO TARQUINI, DDS

GIACOMO TARQUINI, DDS

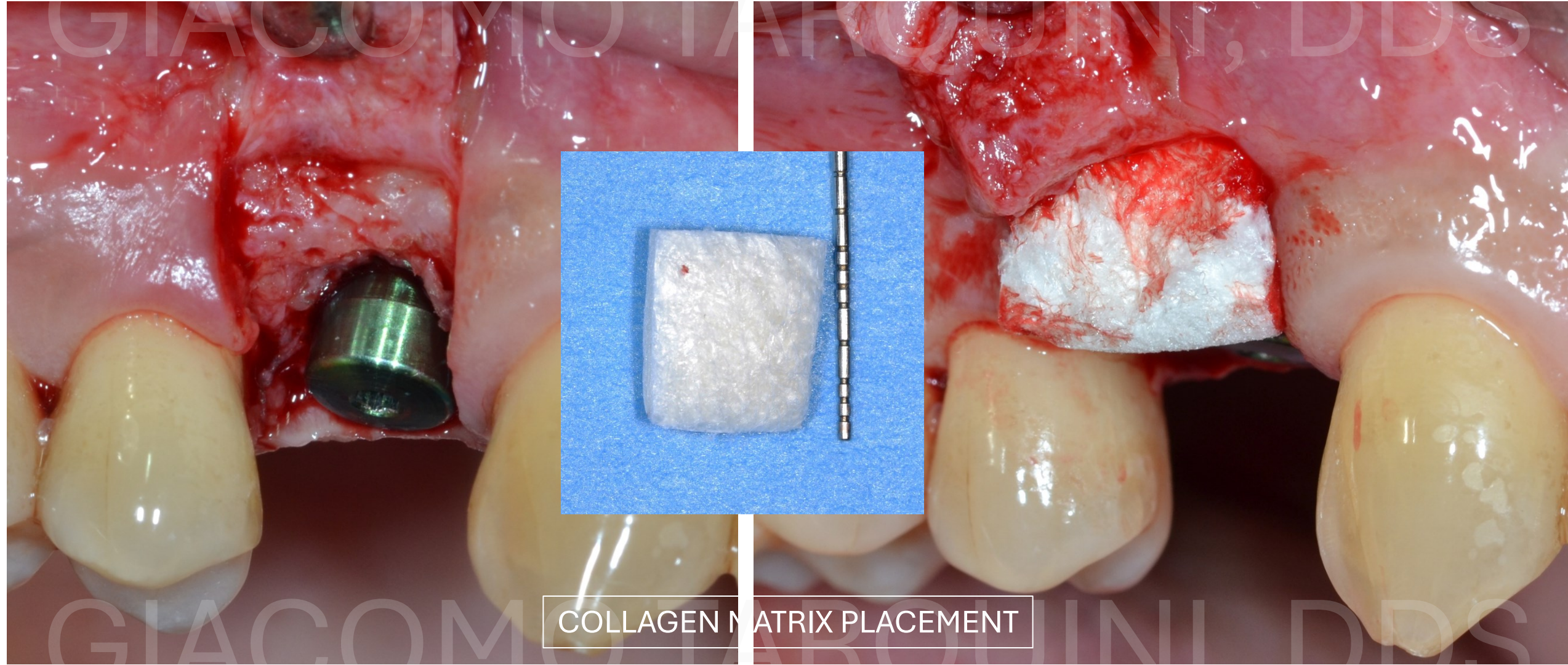


GIACOMO TARQUINI, DDS

RE-ENTRY SURGERY

g_tarquini@libero.it





COLLAGEN MATRIX PLACEMENT

GIACOMO TARQUINI, DDS



GIACOMO TARQUINI, DDS

GIACOMO TARQUINI, DDS



GIACOMO TARQUINI, DDS



GIACOMO TARQUINI, DDS



GIACOMO TARQUINI, DDS

GIACOMO TARQUINI, DDS



GIACOMO TARQUINI, DDS

5 YEARS FOLLOW-UP

g_tarquini@libero.it

GIACOMO TARQUINI, DDS



GIACOMO TARQUINI, DDS

5 YEARS FOLLOW-UP

g_tarquini@libero.it

- **Conclusions:**

- Sinus floor elevation through a fresh extraction socket and simultaneous immediate implant placement seems to be a proper treatment choice in order to spare time and to reduce the overall morbidity.
- The new generation rotating instruments, with low revs and counterclockwise rotation, minimize the probability of Schneider's membrane perforation without the percussion trauma typical of the osteotomic Summers Technique.
- The counterclockwise rotation generates 3 different effects on the implant tunnel perforation:
 - 1) Anterior and lateral thrust of the bone, that has been removed by the tip, and of the liquids as well (blood and physiological water).
 - 2) Ejection and "hammer effect" of the drill that produce an improvement in vertical control.
 - 3) Reduction of cutting efficiency in order to protect sensitive anatomical parts.
- This protocol is really appreciated by our patients and this in turn means better acceptance rate of proposed treatment plan.